

The Ultimate Slimline Window



About Us

At Alumi-lite we set our standards by listening to our clients.

We apply a high level of workmanship, expertise and professionalism to meet your expectations.

Whether you are an Architect or Builder – we can work with you at any stage of the design process, from conceptual designs through to installation.

The Alumi-lite Approach

Our unique approach, attention to detail and quality of service have earned us a reputation for excellence. We are continually pushing the boundaries of architectural glazing, ensuring we make the very most of your property.

At Alumi-lite we are committed to improving the environmental, social and economic impact on the world in which we operate by manufacturing our doors here in the UK.



Windows

The Alumi-Lite Slimline Casement windows are perfect for residential properties. They feature maximized glass areas that allow abundant natural daylight to enter. With a slim 64mm sash-to-frame width, the Alumi-Lite SLC offers a stylish yet practical solution for contemporary and traditional homes, closely resembling the sight lines of original steel-framed windows.

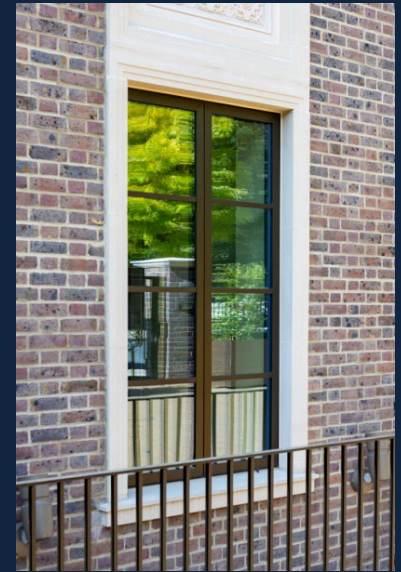
Glazing can be installed from either the inside or outside and is available in a range of thermal options. These windows can also be made as full flush casements for a more classic appearance.

Slimline Features

The Alumi-Lite Slimline Casement window system is designed to meet the demand for an outward-opening window with ultra-slim frames.

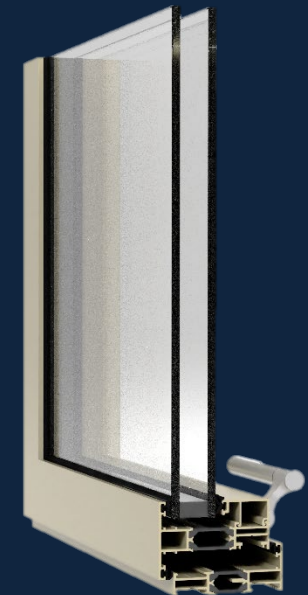
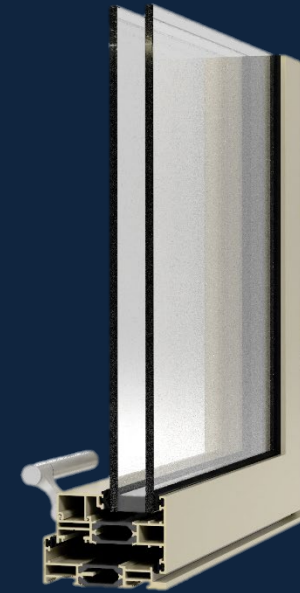
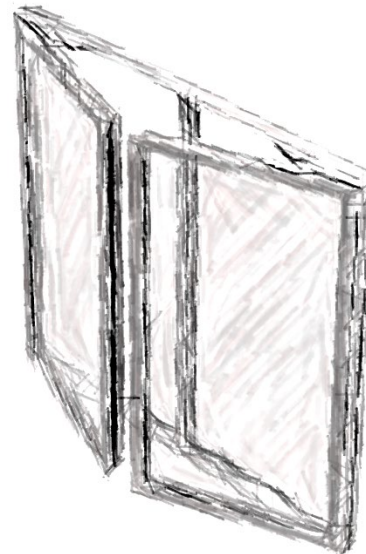
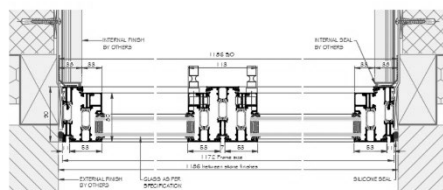
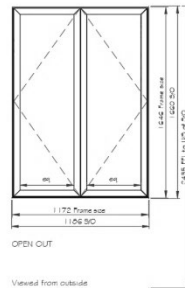
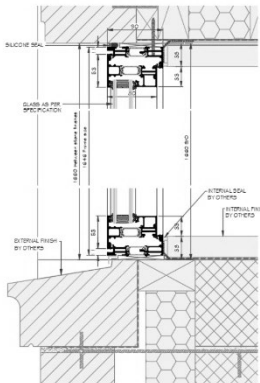
- Premium quality materials
- Highest level of performance
- Industry-leading weather resistance
- Double and triple glazed options
- Unique thermal insulation profiles
- U-value as low as 1.1W/m²K
- Multi-point locking mechanism
- Lockable handles
- PAS 24

Our in-house manufacturing facility gives us full control of every element of the supply chain, ensuring we can be 100% confident with the quality of our products and ensuring we meet your delivery timelines.



Technical specification

Outer frame height	Base profile	5 mm / 33 mm
Vent profiles	Sash profile	53 mm
	Mullion section	53 mm / 83 mm / 113 mm
Overall frame depth	Outer frame	80 mm – fixed glazing 90 mm - opening
	Vent	80 mm
	Maximum vent sizes	Side hung Top hung
Maximum vent weight	Side hung	55 kg
	Top hung	65 kg
Glass thickness		20 mm – 36 mm
Glazing method		Dry glazing with EPDM or neutral silicones
Thermal insulation		Multi-chamber, thermally broken profiles
Handle option		Stainless steel / black / brass



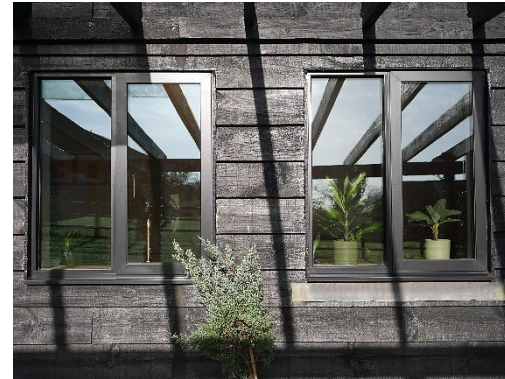
Energy

Thermal Insulation⁽¹⁾
EN ISO 10077-2

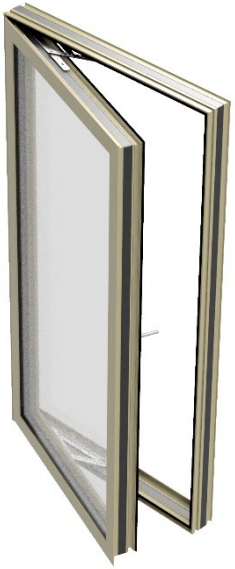
Uf-value down to 1.1 W/m²K, depending on the frame/vent combination

Comfort

Air tightness, max. test pressure ⁽²⁾ EN 1026; EN 12207	1		2			3		4		
	(150 Pa)		(300 Pa)			(600 Pa)		(600 Pa)		
Water tightness ⁽³⁾ EN 1027; EN 12208	1A	2A	3A	4A	5A	6A	7A	8A	9A	E750
	(0 Pa)	(50 Pa)	(100 Pa)	(150 Pa)	(200 Pa)	(250 Pa)	(300 Pa)	(450 Pa)	(600 Pa)	(900 Pa)
Wind load resistance to frontal deflection EN 12211; EN 12210	1		2	3		4	5		Exxx	
	(400 Pa)		(800 Pa)	(1200 Pa)		(1600 Pa)	(2000 Pa)		(>2000 Pa)	
Wind load resistance to frontal deflection EN 12211; EN 12210	A			B			C			



Opening configurations



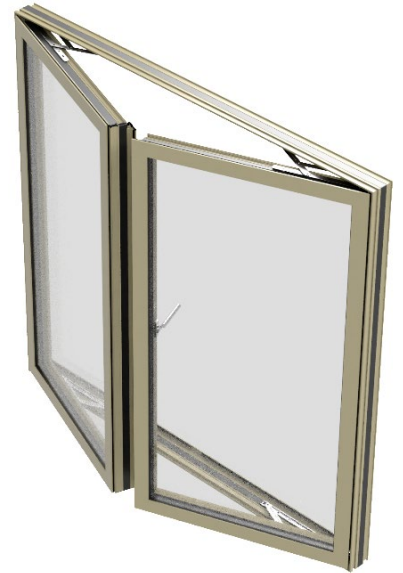
Side hung open out



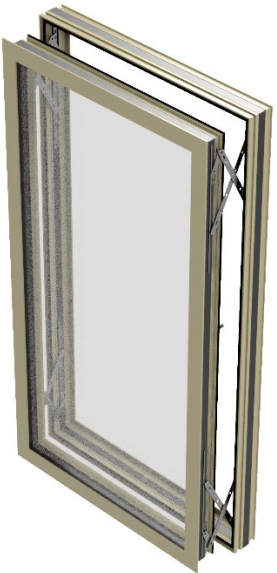
Side hung open out with fixed sidelight



Double opener with fixed mullions



Double opener with travelling mullion



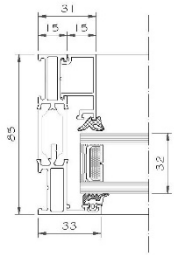
Parallel opening



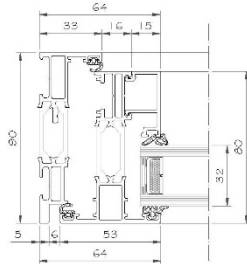
Top hung open out



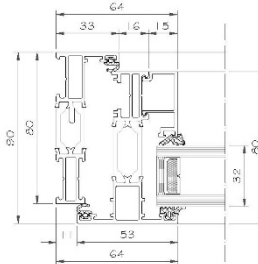
Section details



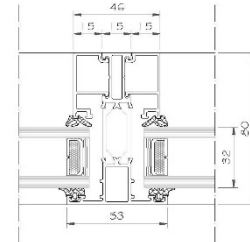
Fixed window profile



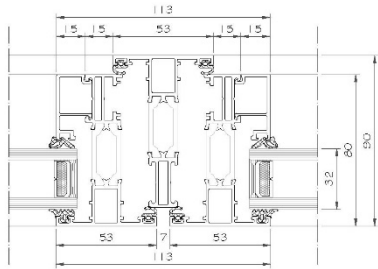
Opening window profile
- Flush frame



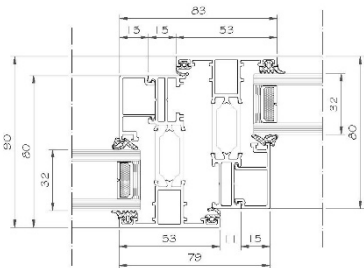
Opening window profile
- Standard



Transom / mullion profile



Double opening window



Opening window with fixed profile





6 Crusader Estate, Stirling Road
Cressex Business Park, High Wycombe
Bucks HP12 3ST
Email: sales@alumi-lite.co.uk
Tel: 01494 358328
Web: alumi-lite.co.uk

